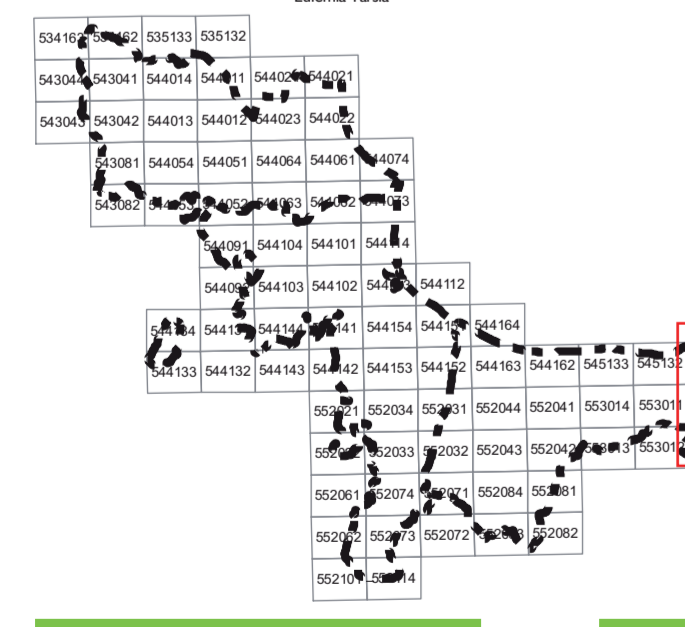







PSA Piano Strutturale Associato della Sibaritide



UFFICIO UNICO DEL PIANO
IL RESPONSABILE DEL PROCEDIMENTO:
ING. FRANCO VERCILLO

UNICAL DTPITER
PROF. FRANCESCO ROSSI

LEGENDA
CLASSI DI PENDENZA (%)

-  0 - 10
-  10 - 20
-  20 - 35
-  35 - 50
-  50 - 80

SCALA
1:10.000

**TAV.5.A2 - CARTA DELLE PENDENZE
CROSIA**

GEOLOGI
Dott. Geol. Beniamino Tomasi (Capogruppo)
Dott. Geol. Beniamino Carrà
Dott. Geol. Massimo Ala
Dott. Geol. Giuseppe Cufari
Dott. Geol. Carmine Fico

P.P.V.
GRUPPO SUAREU
P.V. Arch. Stefano Scanghelli (Capogruppo)
GRUPPO AGRO
Agratudo s.r.l. (Capogruppo)
SIT
Arch. Emilia Olivieri
SIST
LUCAS

TAVOLA ADOTTATO APPROVATO